



# INSTRUCTION BULLETIN

No. 9013139  
Machine: S30  
Published: 07-2015  
Rev. 00

**NOTE: DO NOT DISCARD the Parts List from the Instruction Bulletin. Place the Parts List in the appropriate place in the machine manual for future reference. Retaining the Parts List will make it easier to reorder individual parts and will save the cost of ordering an entire kit.**

*NOTE: Numbers in parenthesis ( ) are reference numbers for parts listed in Bill of Materials.*

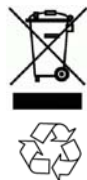
Installation instructions for **kit number 9013137**

## SYNOPSIS:

This kit contains the parts needed to install a skirt kit onto S30 sweepers.  
Please follow step-by-step instructions.

## SPECIAL TOOLS / CONSIDERATIONS: NONE

(Estimated time to complete: 90 minutes)



### PROTECT THE ENVIRONMENT

Please dispose of packaging materials, used machine components such as batteries and fluids in an environmentally safe way according to local waste disposal regulations.

Always remember to recycle.

## PREPARATION:

1. Park the machine on a clean level surface, turn off the machine, Set the parking brake, and remove the key.

**FOR SAFETY: Before leaving or servicing machine, stop on level surface, turn off machine, set parking brake, and remove key.**

2. Remove the main brush from the machine. Set the brush and the idler plate assembly aside.
3. Chock both front tires.

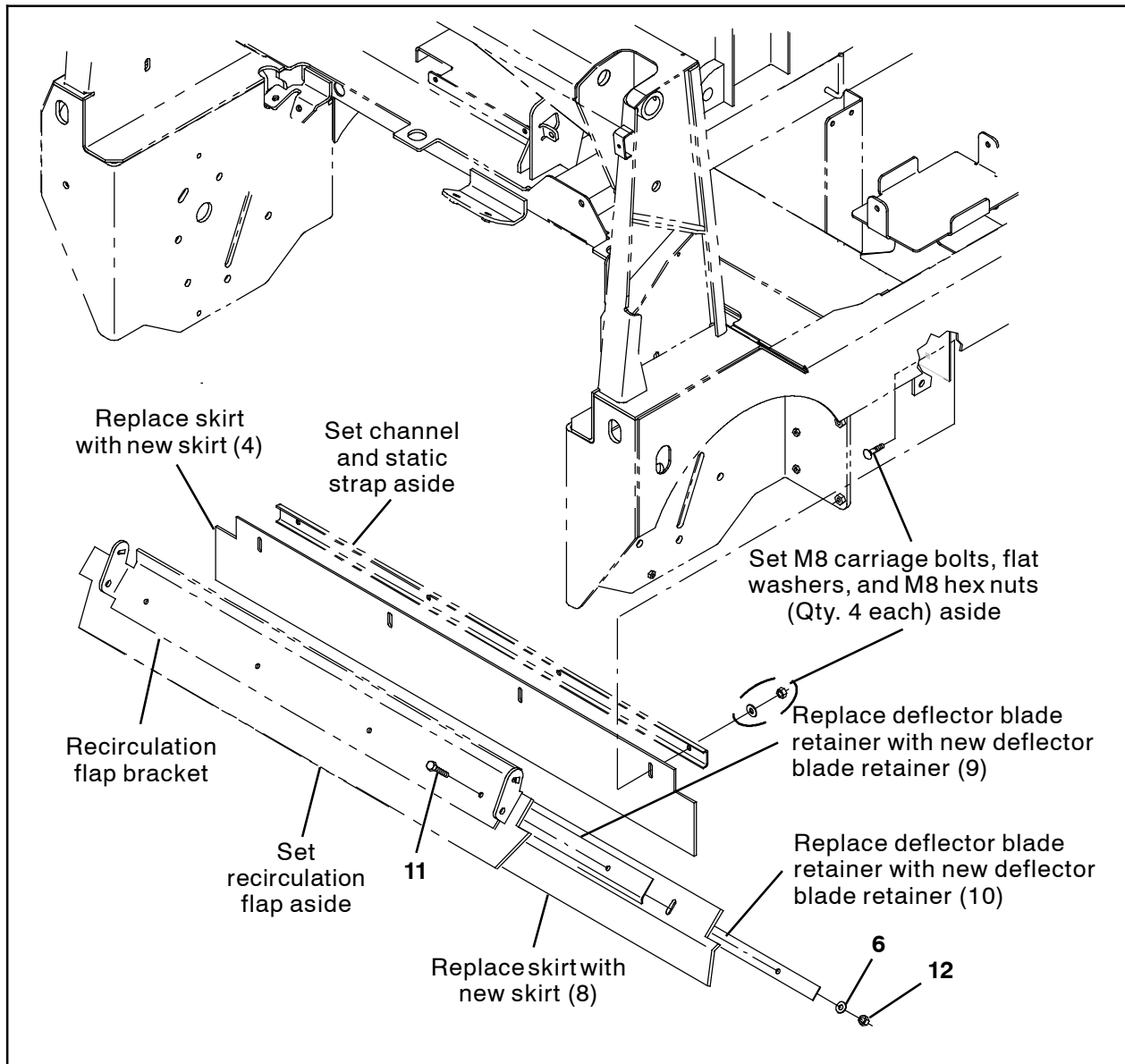
4. Jack up the back end of the machine high enough to access the skirts located behind the main brush. Position jack stands under the frame of the machine and lower the machine onto the jack stands. (Fig. 1)



FIG. 1

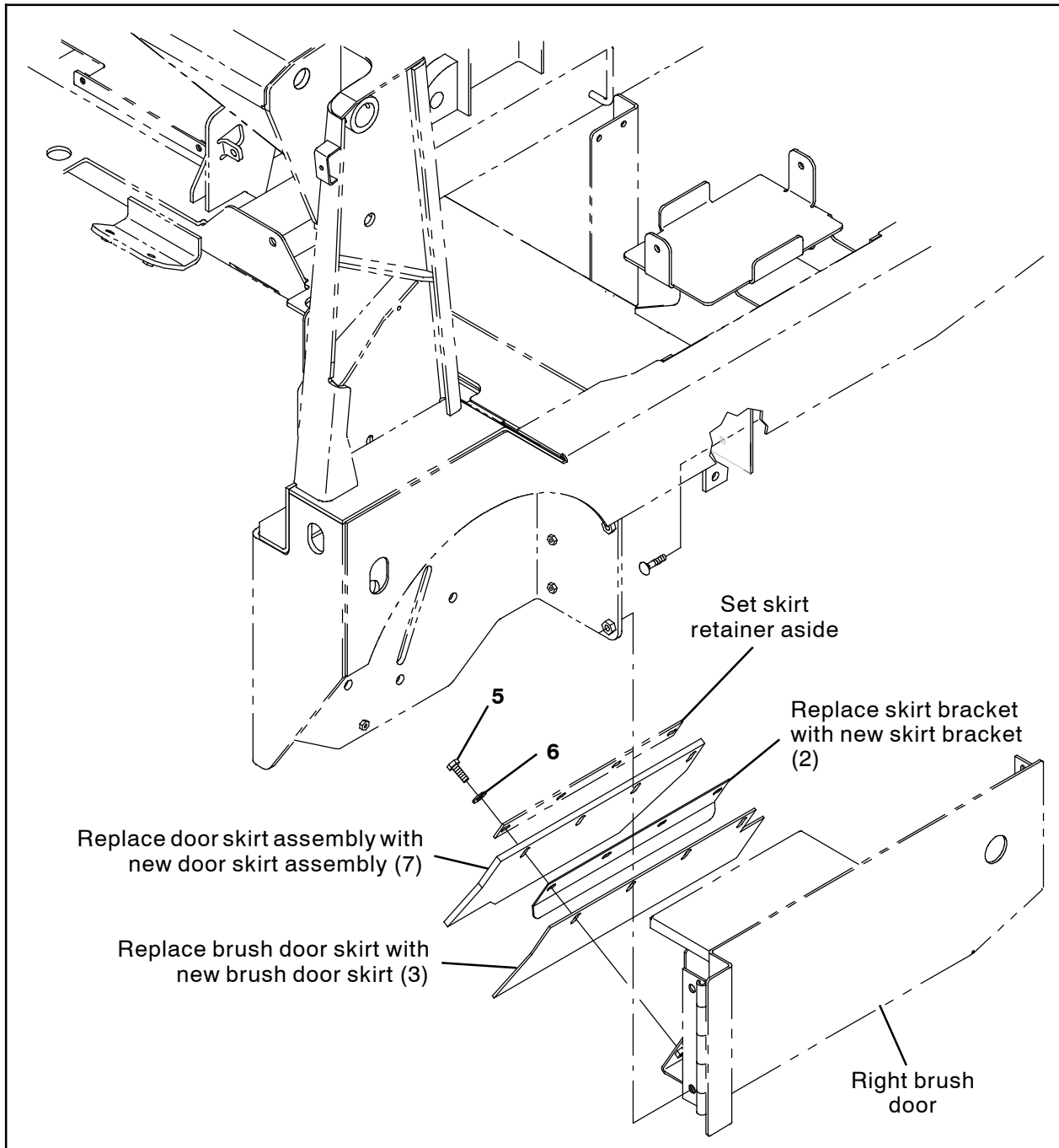
**FOR SAFETY: When servicing machine, block machine tires before jacking machine up. Use a hoist or jack that will support the weight of the machine. Jack machine up at designated locations only. Support machine with jack stands.**

## INSTALLATION:



**FIG. 2**

1. Remove the hardware and channel securing the skirt to the frame of the machine. Set the hardware, static strap, and channel aside. Discard the skirt. (Fig. 2)
2. Remove the deflector blade retainers, skirt, and recirculation flap from the recirculation flap bracket. Set the recirculation flap aside. Discard the deflector blade retainers, skirt, and hardware. (Fig. 2)
3. Use four M8 hex screws (11), four flat washers (6), and four M8 hex nuts (12) to install the recirculation flap, the new skirt (8), and the new deflector blade retainers (9) and (10) onto the recirculation flap bracket. (Fig. 2)
4. Use M8 carriage bolts, flat washers, M8 hex nuts, and channel to install the new skirt (4) onto the frame of the machine. (Fig. 2)
5. Raise the machine off the jack stands, remove the jack stands from under the machine, and lower the machine to the floor.



**FIG. 3**

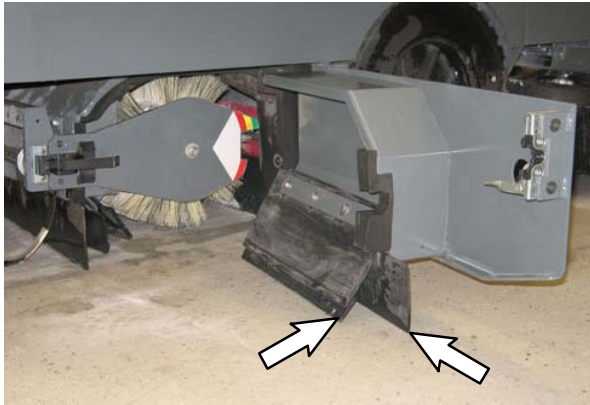
*NOTE: Although only the right brush door is shown, use Fig.3 and following instructions to install the skirts onto both the right brush door and the left brush door. Parts installed onto each door are the same.*

6. Remove the brush door skirts, skirt retainer, and skirt bracket from the brush door. Set the skirt retainer aside. Discard the brush door skirt, skirt bracket, skirt assembly, and all mounting hardware. (Fig. 3)
7. Use four M8 hex screws (5), four flat washers (6), and the skirt retainer to install the new door skirt assembly (7), the new skirt bracket (2), and the new brush door skirt (3) onto the brush door. (Fig. 3)
8. Repeat previous two steps to install the other skirt assembly (7), the skirt bracket (2), and the brush door skirt (3) onto the other brush door. (Fig. 3)

9. Reinstall the main brush into the machine.

*NOTE: Be sure the rear tire is properly inflated before checking brush door skirt and rear skirt clearances.*

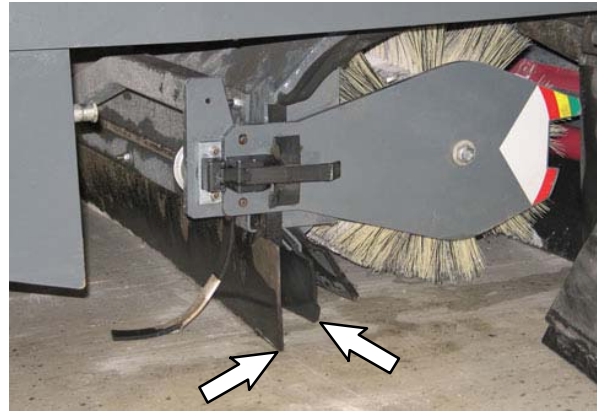
10. Check the height of the the brush door skirts. The brush door skirts should clear the floor by 0.12 in. to 0.25 in. (3 mm to 6 mm). The brush door skirts have slotted holes to allow for a ground clearance adjustment. Adjust both brush door skirts as necessary. (Fig. 4)



**FIG. 4**

*NOTE: The brush door must be closed to check for proper adjustment.*

11. Check the height of the the rear skirts. The rear brush skirt should clear the floor by 0.12 in. to 0.25 in (3 mm to 6 mm). The rear skirts have slotted holes to allow for a ground clearance adjustment. Adjust the rear skirts as necessary. (Fig. 5)



**FIG. 5**

12. Start and test the machine. Watch for excessive dusting when the machine is operated. Readjust brush door skirts / rear skirts as necessary.

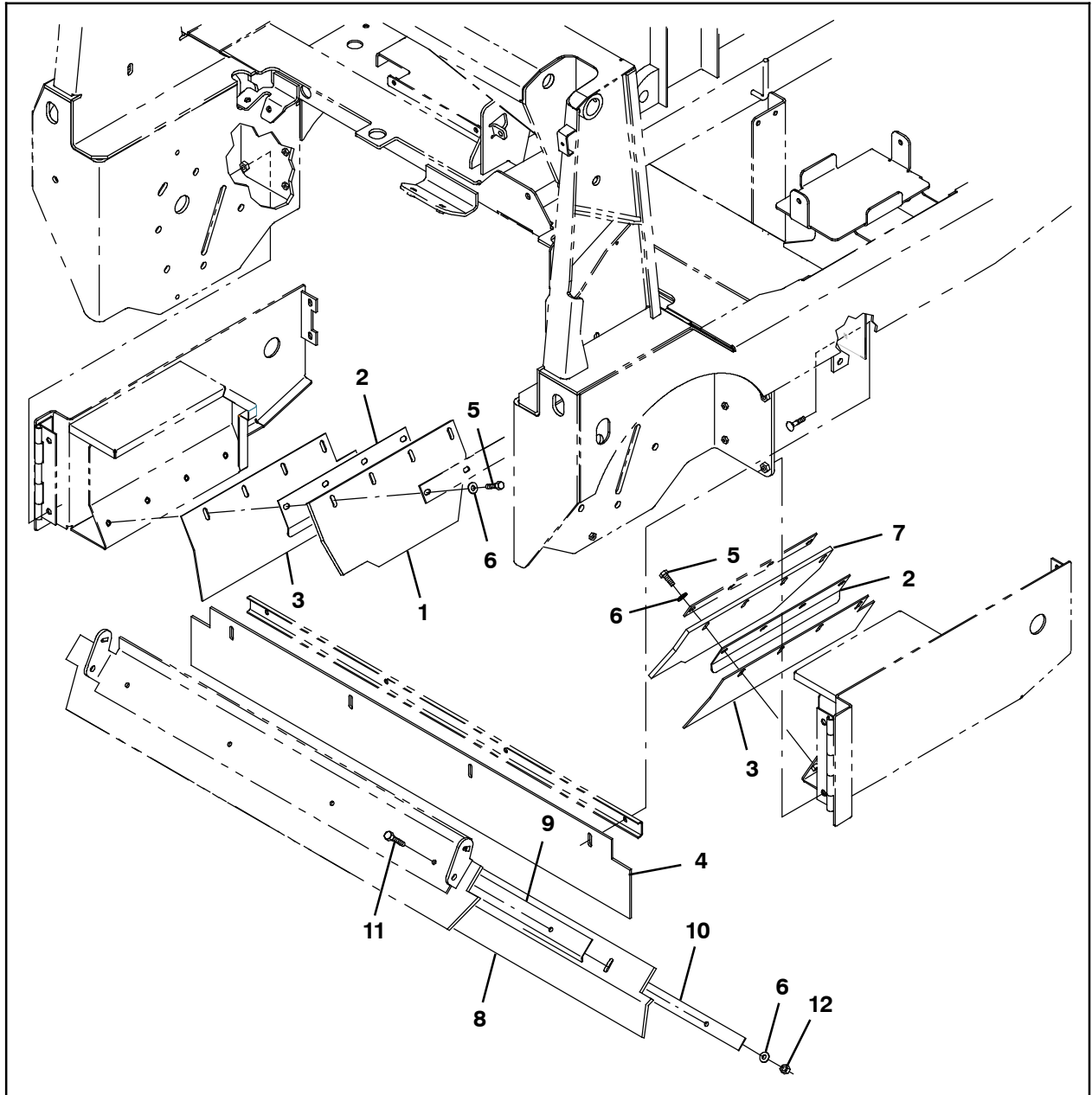


FIG. 6

---

**Bill Of Materials For Skirt Kit, Side / Rear [S30] - 9013137**

<b>Ref.</b>	<b>Tennant Part No.</b>	<b>Description</b>	<b>Qty.</b>
1	1212911	Skirt Assy, Door, Brush, RH	1
2	1045352	Bracket, Skirt	2
3	1212134	Skirt, Door, Brush	2
4	1045348	Skirt, Neo, .18, 06.74W 50.00L, 04/ SL	1
5	76570	Screw, Hex, M8 X 1.25 X 30, 8.8	8
6	32491	Washer, Flat, 0.31, Std	12
7	1212910	Skirt Assy, Door, Brush, LH	1
8	1212912	Skirt, Neo, .18, 6.42W X 48.73L, 04/SL	1
9	1212908	Retainer, Blade, Deflector	1
10	1212959	Retainer, Blade, Deflector	1
11	41342	Screw, Hex, M8 X 1.25 X 40, 8.8	4
12	08709	Nut, Hex, Lock, M8 X 1.25, NL	4

TENNANT COMPANY  
P. O. Box 1452  
Minneapolis, MN 55440-1452